

Title (Times New Roman 20pt., Bold)

Full First Author¹, Full Second Author², * and Full Third Author³ (TNR 12pt., centred)

¹*Full affiliation of first author, including country (in English, TNR 10pt. centred)*

²*Full affiliation of second author, including country (in English)*

³*List all affiliation in the same way (in English)*

**Corresponding author*

Abstract.

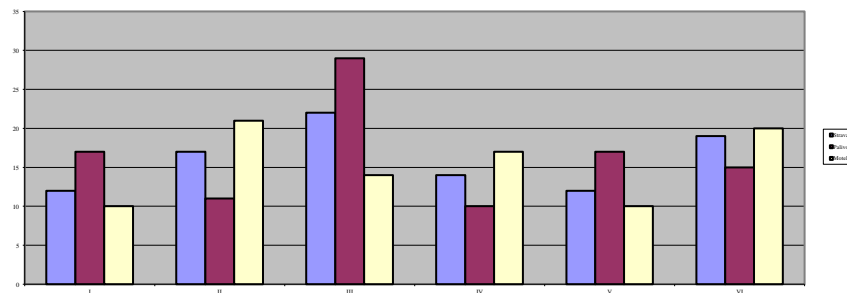
Here write the abstract (200 – 250 words) in English! (Times New Roman 12 pt. alignment in block, spacing 1,0) Abstract should outline the purpose of the article, method of the research, data and main results. Text

Keywords: key word, key word, key word (max 5 key words in English)

1. Introduction (Times New Roman 14pt., bold)

The main text¹, (Times New Roman 12pt., alignment in block, spacing 1,0)

Figure 1: Figure description (TNR 10pt., centered, italics)



Source: (TNR 10pt. italics)

1.1 Title of the 2nd level (Times New Roman 12pt., bold)

(Times New Roman 12pt)

¹ Footnote (Times New Roman 10pt).

1.1.1 Title of the 3rd level (Times New Roman 12pt., bold)

(Times New Roman 12pt)

Tables and figures should be numbered and references to them must be in the text. Acceptable labeling for a table is Tab.1 and Fig. 1 for a figure.

Table 1: Table description (Times New Roman 10pt., italics)

Times New Roman 10pt	Times New Roman 10pt	Times New Roman 10pt
Times New Roman 10pt	Times New Roman 10pt	Times New Roman 10pt
Times New Roman 10pt	Times New Roman 10pt	Times New Roman 10pt
Times New Roman 10pt	Times New Roman 10pt	Times New Roman 10pt

Source: (Times New Roman 10pt., italics)

Equations

(Times New Roman 12pt) Equations (refer with: Eq. 1, Eq. 2,...) should be placed in the middle, denoted by numbers in round parentheses and transformed by equation conversion manager, **do not use Print Screen or jpg format**. For example:

$$r_i - r_f = \beta_i(r_M - r_f), i = 1, 2, \dots, n \quad (1)$$

2. Body of paper (Times New Roman 14pt., bold)

(Times New Roman 12pt) The article must be divided into chapters. *Introduction* and *conclusion* are obligatory. It is recommended to adjust body of the paper to the common organization structure of scientific papers – **IMRaD (Introduction, Methods, Results and Discussion)**.

3. Conclusion (Times New Roman 14pt., bold)

(Times New Roman 12pt)

Acknowledgment (Times New Roman 12pt. bold)

This paper is an output of the

*References in text should have this form (surname, year), for example:

- | | |
|--|--|
| 1 author: | (Krugman, 2012) |
| 1 author and the same year of publication: | (Hoffman, 2012, A), (Hoffman, 2012, B) |
| 2 authors: | (Krugman & Hoffman, 2014) |
| 3 authors: | (Hoffman et al., 2012) |

References (Times New Roman 14pt., bold)

(Times New Roman 12pt) For each work shown in the list of references must be a reference in the text. All citations in the text and all references must meet APA styles (6 th)

PLEASE RENAME DOCUMENT ACCORDING TO NAME AND SURNAMES OF FIRST AUTHOR.

For example: Sasinan_Sastsara